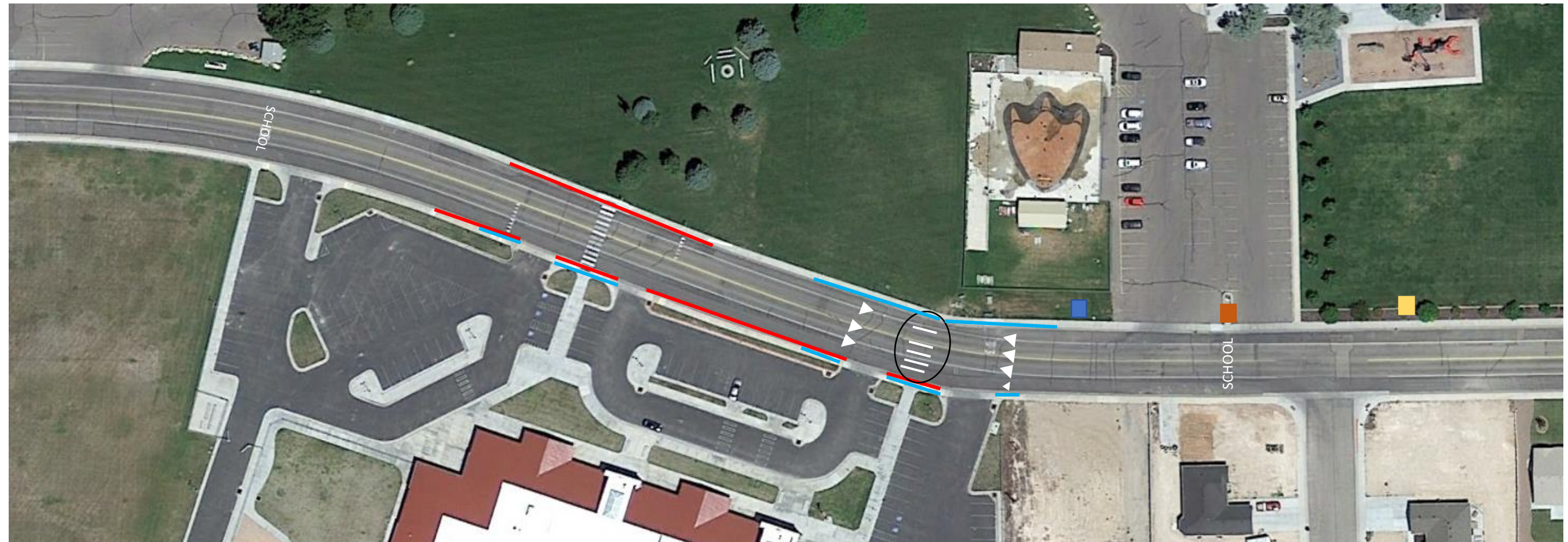


1900 South Crosswalk Project



— Current “no parking” red curb

— Required “no parking” red curb

△ Required yield/stop for crosswalk

■ Reduced speed sign/lights

■ School zone warning sign

■ Reduced speed ahead sign

□ SCHOOL School road paint

This is just an estimated drawing, the exact lengths and requirements must be confirmed with Jim Harper 435-828-5554